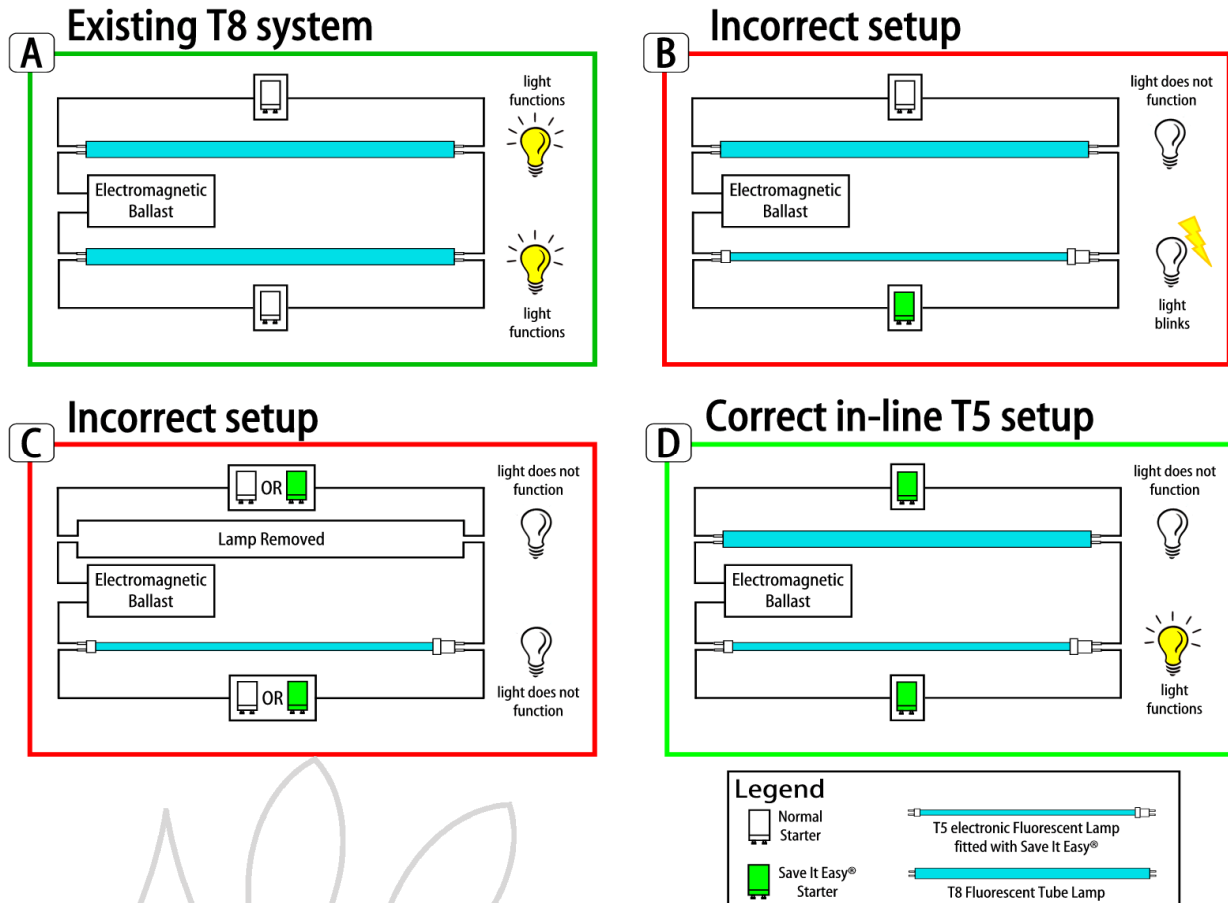


## Upgrading dual lamp 18W T8 luminaires to electronic 14W T5 lamps using *Save-It-Easy*®



### DESCRIPTION OF BULLETIN UPDATE

When using the *Save It Easy*® in-line T5 adaptor, the device interacts with one electromagnetic ballast per lamp in T8 luminaires. This is called the *Save It Easy*® “one ballast one lamp rule”. As some 18Watt lamp arrangements share a common 36 Watt rated ballast, only one 14W T5 electronic lamp will function due to the “one ballast one lamp rule”. Scenario D. in the picture above, shows the correct configuration to ensure one T5 lamp properly lights up.

Note the 2 x *Save It Easy*® green starters and the old T8 lamp remaining in the luminaire – even though it does not activate.

### Contact us at:

**ecoBright® energy solutions**  
Office 15, 207-211A Buckley Street  
Essendon VIC 3040 Australia  
T 1800 133 666 F +61 3 9331 0028

**ecoBright® energy solutions**  
Unit 16, 6 Airborne Road  
Albany NSC 0632 New Zealand  
T +64 9 415 7345 F +64 9 415 7346

Consider the typical energy metrics for this circuit:

Before *Save It Easy*®:

$$2 \times 18W \text{ lamps} + 1 \times 9W \text{ ballast} = 45 \text{ Watts}$$

After *Save It Easy*®:

$$1 \times 14W \text{ lamp} + 1 \times 3W \text{ *Save It Easy*®} = 17Watts$$

Energy Savings = 45 - 17 = 22 Watts = **48% saving**

With increasing electricity costs, a 48% saving is substantial and will significantly contribute to reducing greenhouse gases...another reason to upgrade to T5 using *Save It Easy*® with ecoBright.

**DISCLAIMER:** The information contained herein is drawn from various sources and is understood to be correct at the time of publication. The information may not be free from errors or may be inappropriate for a specific application. ecoBright® accepts no liability whatsoever, to any person for any injury, loss or damage that may arise in connection with any use or reliance on the information. Please contact ecoBright® staff to discuss your specific application.